



Advanced Protection Technologies, Inc.

Secondary Surge Arrester for Home, Apartment, Farm and Equipment

NOTICE: Advanced Protection Technologies, Inc. (APT) recommends that a licensed electrician install the TE/1SSA and TE/4SSA Series of Secondary Surge Arresters. Unqualified personnel could install the arrester incorrectly, making it inoperative, ineffective, or hazardous. Such persons are in danger while working with high voltages without sufficient experience to prevent injuries to themselves and others from electrical shock.

DESCRIPTION:

The APT Secondary Surge Arresters are MOV (Metal Oxide Varistor) based, hardwired devices, often referred to as Lightning Arresters. These devices are designed to protect electrical equipment from damaging effects of voltage transients induced by lightning, or caused by utility switching, insulation arcing, electrical motor cycling, or other large or sudden changes in the electrical power flow on incoming AC lines.

For complete protection APT recommends that the ground circuit is solidly grounded to water pipes, adjacent ground rods, lightning rods, etc.

The arresters utilize a single MOV per pole to reduce potential load balancing/sharing problems of paralleled MOV devices during operation. APT recommends the use of additional surge protection devices such as plug-in strips, or the disconnection of particularly sensitive electronic equipment during electrical storms.

Advanced Protection Technologies, Inc. arresters are neither designed nor intended for use as protection against a direct lightning strike to a facility or piece of equipment.

The TE/1SSA and TE/4SSA Series of lightning arresters are epoxy encapsulated devices designed to be easily installed in any physical position indoors or outdoors utilizing the integral 1/2" threaded nipple and supplied metal lock nut. The arrester has 18" long, 12 AWG multi-stranded leads that are color coded for ease of installation.

The TE/1SSA and TE/4SSA Series are UL listed as OWHX devices and comply with the current edition of ANSI/IEEE C62.11 testing.

Limited Warranty

Advanced Protection Technologies, Inc. warrants its AC Surge Arrester products against defective workmanship and materials for 1 year from the date of original purchase. The unit must have been installed by a qualified and licensed electrician in order to qualify for Warranty coverage.

Liability is limited to the replacement of the defective product. A Return Material Authorization (RMA #) number must be given by the company prior to the return of any product. Returned products must be sent to the factory with the transportation charges prepaid.

APT specifically disclaims all other warranties, expressed or implied. Additionally, the company will not be responsible for incidental or consequential damages resulting from any defect in any product or component thereof.

Advanced Protection Technologies, Inc.

14550 58th Street North, Clearwater, Florida 33760 • 800-237-4567 • Fax: 727-539-8955

INSTRUCTIONS FOR THE INSTALLATION OF THE TE/1SSA AND TE/4SSA SERIES LIGHTNING ARRESTER

This arrester should be installed in accordance with all applicable local and national electrical codes by qualified personnel only.

Read all instructions carefully before installation.

A. Mount Arrester:

The TE/1SSA and TE/4SSA Series arresters are designed to be installed utilizing the threaded nipple supplied as an integral part of the arrester.

1. Turn off power.
2. Locate a knockout as close as possible to the electrical connection point of the arrester.
3. Remove the knockout and disregard.
4. Insert the arrester into the hole and secure with the supplied lock nut. Tighten the lock nut.

B. For maximum protection:

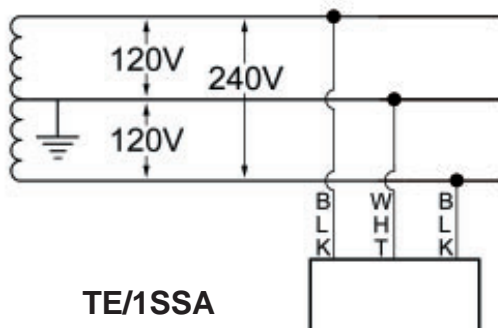
1. Cut the leads to the shortest length possible, avoiding any sharp bends in the wire.
2. Insure that clean, tight, permanent connections are utilized.

C. Connect the arrester leads to the system as indicated in the below listed wiring diagram. Connect the white lead (Ground/Neutral) first, then connect the black leads (Line).

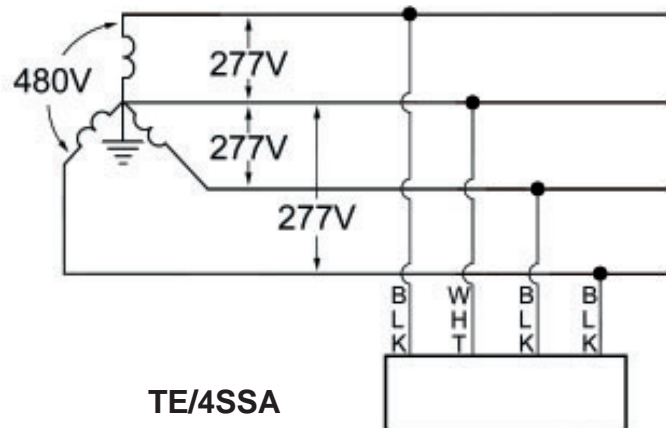
D. Turn on power.

INSTALL THE ARRESTER AS CLOSE AS POSSIBLE TO THE DESIGNED PROTECTED EQUIPMENT FOR MAXIMUM EFFECTIVENESS.

ELECTRICAL SCHEMATICS



TE/1SSA



TE/4SSA